

JW PROJECTS

Image: Ge Hui, *The Shadow Self*, 2022–2023, Oil on canvas, 100 x 80 cm

GAMES PEOPLE PLAY

solo exhibition of Ge Hui
curated by Irina Stark

21 JAN – 22 MAR 2026

3 Kim Yam Road, Singapore 239321

Ge Hui 2022–2023

GAMES PEOPLE PLAY

JW PROJECTS is pleased to present Games People Play, the first solo exhibition in Singapore by Shanghai-based Chinese artist Ge Hui. Borrowing its premise and title from Eric Berne's seminal book Games People Play, the exhibition explores the subtle, often unspoken psychological strategies that shape human relationships, social roles, and cultural performance.

Created around the time of the Shanghai COVID lockdown, this body of work sees Ge Hui deepen his longstanding interest in interpersonal behavior, translating Berne's theories of transactional analysis into a visual language that is at once playful, introspective, and quietly provocative. The works in the exhibition come from the artist's personal collection and are complemented by a new large-scale painting created specifically for this presentation. Across his oeuvre, Ge Hui explores the rituals, negotiations, and coded interactions that shape daily life—revealing how individuals perform, compete, collaborate, and conceal within both intimate and public spheres.

Rather than illustrating psychological concepts directly, Ge Hui reimagines “games” as poetic metaphors: shifting spatial arrangements that suggest power dynamics; distorted silhouettes that hint at emotional distance; repeated gestures that evoke the cyclical nature of human patterns. His works invite viewer to consider not only the games we play with others, but also the ones we play with ourselves—out of habit, fear, desire, or hope.



Courtesy of the artist

Figure Three, 2021-2023

GE HUI

Oil on canvas

150 x 120 cm

SGD 38,000.00 + GST

Figure Three portrays three intertwined characters, suggesting a close bond that might exist among friends, or perhaps hinting at a love triangle. It may also allude to psychological triangulation—a manipulation tactic in which a third person is drawn into a two-person relationship or conflict to control communication, create division, or gain power.





Courtesy of the artist

Little Bird Told Me, 2022-2023

GE HUI

Oil on canvas

80 x 120 cm

SGD 28,000.00 + GST







Courtesy of the artist

Big Fish, 2021-2023

GE HUI

Oil on canvas

80 x 120 cm

SGD 28,000.00 + GST

The paintings ***Big Fish*** and ***A Little Bird Told Me*** are installed facing each other, establishing a visual dialogue. One depicts a self-assured male figure resting comfortably on a giant red fish; the other features a gender-fluid figure posing with a bird—long a symbol of freedom or a bearer of secret messages in classical painting traditions.



Courtesy of the artist

***The Shadow Self*, 2022-2023**

GE HUI

Oil on canvas

100 x 80 cm

SGD 25,000.00 + GST

The painting ***The Shadow Self*** depicts a dreamy woman accompanied by a monkey. Could the monkey be her totem animal, or perhaps a reflection of her inner state of mind? The term “shadow self,” popularized by psychologist Carl Jung, refers to the unconscious aspects of one’s personality that have been rejected or suppressed—emotions, desires, or traits considered unacceptable. Jung believed that integrating the shadow self through a process known as shadow work involves recognizing and accepting these hidden parts in order to become a more complete and balanced individual.





Courtesy of the artist

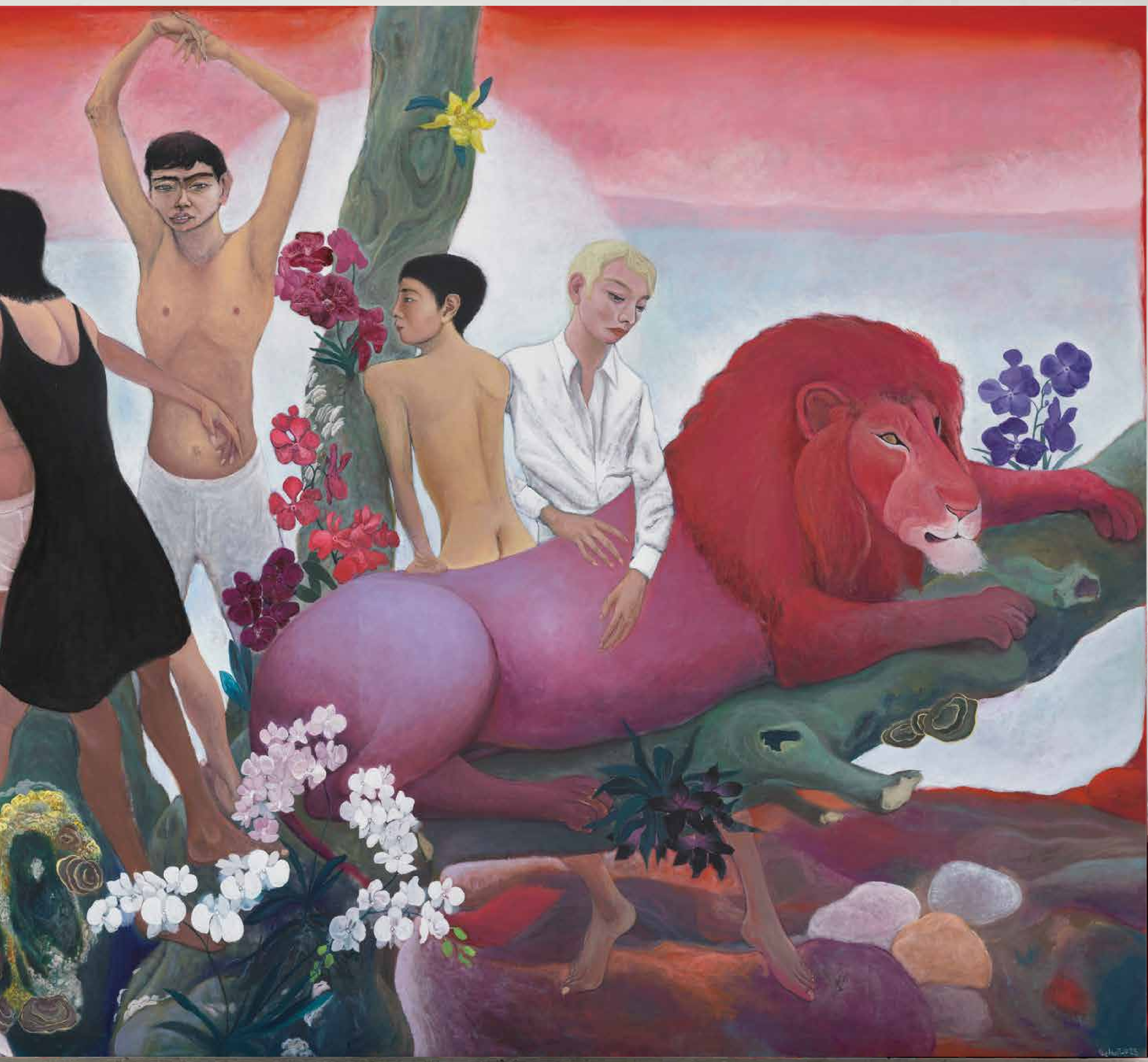
Lion's Gate, 2025

GE HUI

Oil on canvas
Diptych 200 x 300 cm
each panel 200 x 150cm

SGD 74,000.00 + GST

The two-panel work ***Lion's Gate*** serves as the focal point of the exhibition, portraying a group of friends enjoying their time in a surreal landscape. The orchid-laden tree and the lion both reference Singapore's iconic symbols—the “jungle city” and the Merlion. The title also echoes the concept of the “Lion's Gate Portal”, a moment in astrology believed to offer powerful opportunities for manifestation, clarity, and transformation, with origins tracing back to the beliefs and wisdom of ancient cultures.







Ge Hui 葛辉

b. 1983, Jiangsu, China

Born in Jiangsu in 1983, Ge Hui lives and works in Shanghai. His practice centers on an exploration of the body and its forms. He approaches images of the human figure, animals, and plants as distinct formal elements, assembling them through continual shifts in perspective and focus. By recombining these components into structures charged with tension, Ge Hui creates a new visual order—one that challenges conventional ways of seeing and resists habitual interpretation. Ge Hui works are held in private and institutional collections in China and internationally.

Selected Solo Exhibitions

2025
What a Harsh Morning Sun, Platform China Contemporary Art Institute, Beijing, China

2023
Status of the Last Man. HOW Art Museum, Shanghai, China

2022
Ripple. Platform China Contemporary Art Institute, Beijing, China

2021
The Morning Sun is Harsh, Capella Hotel, Shanghai, China

Tea Room (Ge Hui Solo Project). Shanghai Tower. Shanghai, China

2018
Paradise of Desire. Platform China Contemporary Art Institute, Beijing, China

Selected Group Exhibitions

2025
The Shape of Time: 20th Anniversary Special Exhibition. Platform China Contemporary Art Institute, Beijing, China

Tender, White Rabbit Gallery, Sydney, Australia

2024
The Brink. Universe Gallery, London, United Kingdom

Bodyscapes in Motion. ShanghART SUHE, Shanghai, China

2023
Global Painting. Museum of Modern and Contemporary Art of Trento and Rovereto (MART), Trento, Italy

I am the people. The White Rabbit Gallery, Sydney, Australia

2022
Variation, Yixing Art Museum, Yixing, China

2021
You Xian Chang Kai. Art Museum of Nanjing Normal University. Nanjing, China

2010-2020 Metamorphosis: A Chapter of Figurative Painting since 2010. AMNUA. Nanjing. China

Art as Living Organism. Madein Gallery, Shanghai, China

Spring Fever. Platform China Contemporary Art Institute, Beijing. China

2020
Jade Plate, G+ A11 Space, Wuyishan, China

Platform China's 15th Anniversary Special Exhibition. Platform China Contemporary Art Institute. Beijing. China

The Sky is Far Away, G+ Art Space, Wuyishan. China

2019
To Youth. Platform China Contemporary A11 Institute. Beijing. China

2016
TONGXI- The 3rd China International Art Forum&Exhibition on Installation Art, Today Art Museum, Beijing, China

2014
The 2nd China Forum of Installation Art & International Exhibition for Art Installations, Long Museum. Shanghai. China

In Their Places - The Self Construction in Contemporary Art, Shanghai Duolun Museum of Modern Art, Shanghai. China

Public collections

White Rabbit Museum (Sydney)
Longlati Foundation (Shanghai)
HOW Art Museum (Shanghai)
The Cloud Collection (Nanjing)

About Curator

Irina Stark is a Los Angeles-based art advisor and curator with a particular focus on the Asia Pacific region. In the last three consecutive years, she was included in ARTnews's lists of 'The Top 75 Art World Professionals' and 'The 135 Top Art World Professionals'. Prior to establishing her creative consultancy, Irina worked for over 15 years at leading European and American commercial art galleries and institutions. She holds an MA in Art History and Curatorial Studies from University of Sorbonne Paris 1 as well as an MPhil in Geopolitics from French Institute of Geopolitics.

About JW PROJECTS

Founded in Singapore in 2022, **JW PROJECTS** specialises in modern and contemporary works by internationally established artists from different geographical regions and aims to providing them the opportunity to exhibit outside of their own areas. The gallery also nurtures and promotes emerging regional talent, presenting a varied programme of solo and group exhibitions with a strong focus on works of art on canvas, paper, sculpture, photography and new media.

CONTACT

Jingwei Wang, Director
jingwei@jwprojects.art

Christine Lok, Sales Director
christine@jwprojects.art

LOCATION

3 Kim Yam Road, #01-01
Singapore 239321
+65 6954 9803